



SEASONAL UPDATE

WINTER 2023 - 2024



HOLIDAY LIGHTS

The Holiday lights have returned this winter and are sure to brighten up your evenings. If you notice any issues with the lights, please don't hesitate to reach out to:

info@coremanagement.ca

SNOW REMOVAL

The City of Edmonton is responsible for the snow removal within the community. Should you have any questions or concerns, please contact the City of Edmonton by calling 311 or 780.442.5311.

2024 ANNUAL OPERATING FEES

Notices for the 2024 Annual Operating Fees have been mailed out as per the encumbrance and there will be ample time to pay without penalty.

If you have sold your property in the community, please make sure the Association is made aware of a change in ownership by contacting Core Real Estate Group.

email: info@coremanagement.ca

phone: 780.651.1577.

For snow and ice removal pertaining to homeowners property sidewalks please visit:

https://www.edmonton.ca/transportation/on_your_streets/sidewalk-snow-removal

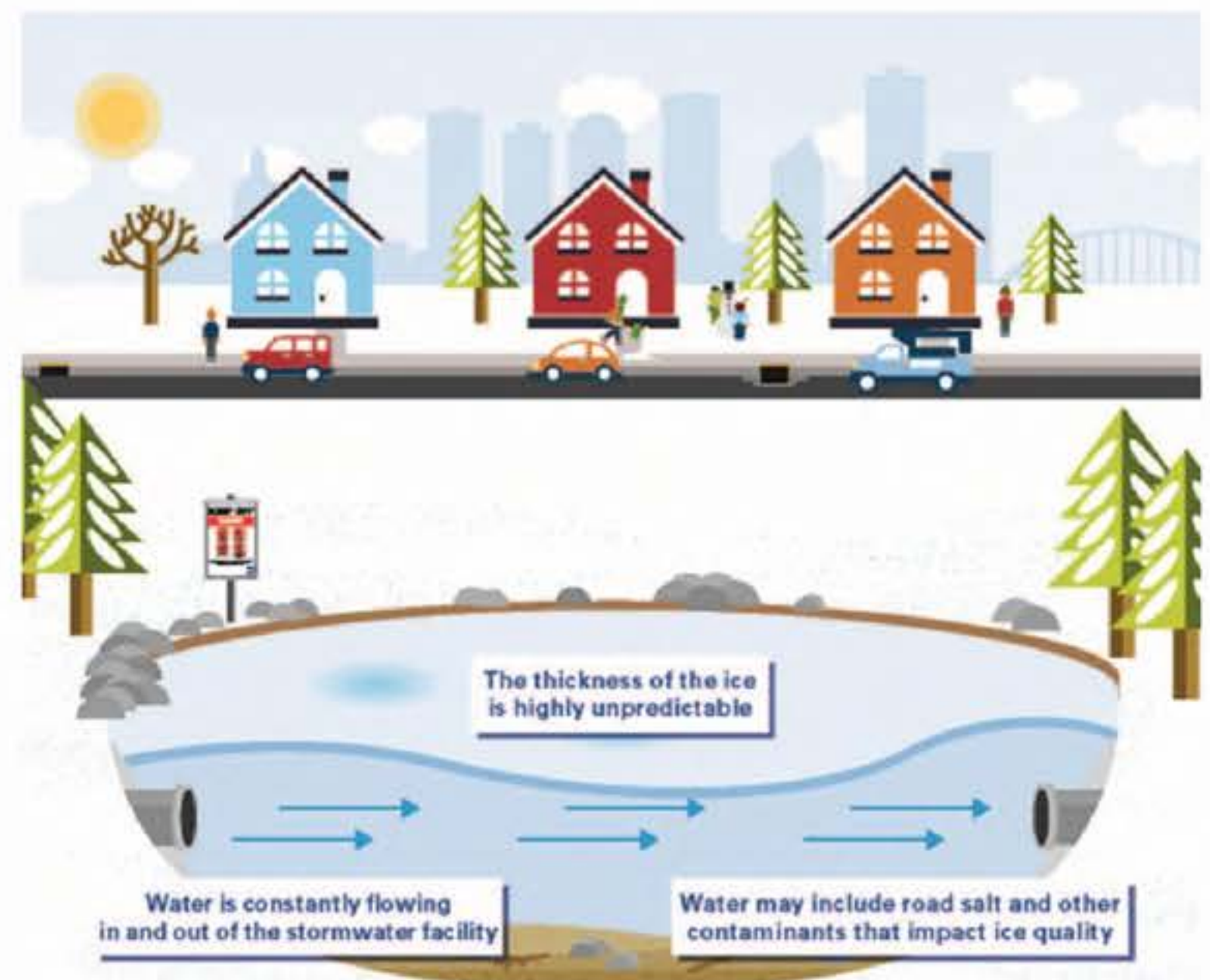
Keep up to date with the City's snow removal status, by visiting www.edmonton.ca/transportation/on_your_streets/neighbourhood-roads-winter



FOUNTAINS AND STORMWATER PONDS

In preparation for the winter, the waterfall and the stormwater-aerating fountains has been removed with installation due in the Spring of 2024.

We understand that the community wants to enjoy the outdoors as much as possible during the colder months, please be reminded that storm water facilities are not recreational lakes. Stormwater ponds are not safe for any type of recreation including sledding, skating and walking. Please visit www.epcor.com for additional resources.



For outdoor ice skating rinks, please visit https://www.edmonton.ca/activities_parks_recreation/outdoor-ice-rinks

CONTACT JAGARE RIDGE HOA

Core Real Estate Group
email: info@coremanagement.ca
phone: 780.651.1577



SEASONAL CRIME INFORMATION

With the holiday season upon us we wanted to point out a few simple things that you can do to potentially make the winter season more enjoyable for everyone and to avoid any loss of property or gifts. While shopping during this time of year, many of us make multiple stops as we attend a variety of stores to purchase gifts for loved ones. Please keep your purchases out of view and stow them in the trunk or rear area of your vehicle. Consider bringing a blanket to cover your purchases if you operate a van or SUV. Thieves wander the lots of retail outlets blending in with the crowd in search of property left in plain sight, avoid being victimized and store your purchases out of view.

The season also brings an increased volume of mail as friends and family from out of town send gifts to loved ones. With the increase in online shopping, many of us have gifts delivered to our homes as well. Please keep an eye on the Canada Post Boxes as these are a common target in search of valuable items.

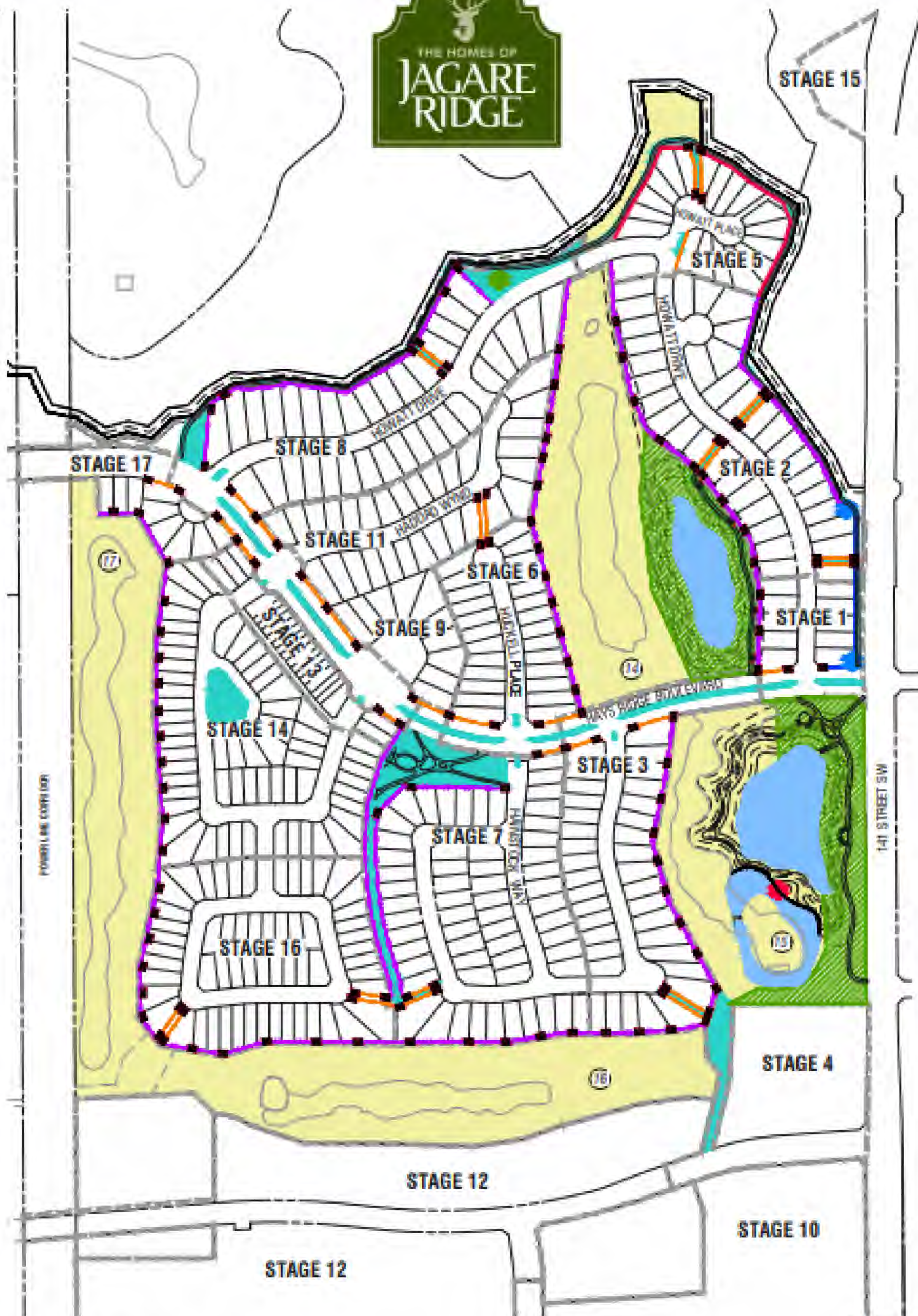
We would also like to remind all owners of the importance of securing vehicles and property during this time. Here are some tips to help prevent theft:

- Always ensure doors are locked and windows are closed when you leave your vehicle or property.
- Remove any valuables from your vehicle.
- Keep any garage door openers out of sight. Store your garage door opener in a glove box or other concealed place, or take it with you.
- Consider using anti-theft devices, such as an electronic engine immobilizer or steering wheel lock.

PLEASE REMEMBER TO...

- Report all suspicious activity to Edmonton Police Services at 780.423.4567.
- Ensure all doors are locked behind you.
- Take a few extra seconds to allow your garage door to close.





Subject to Change

HOA OBLIGATIONS LEGEND

- Stage 1 - Masonry Entry Feature (includes stonework, signage and lighting)
- Stage 2 Masonry Entry Feature (includes stonework, signage and lighting)
- Masonry Pillar - (includes stonework)
- Stage 1 - Pond Fountain
- Stage 3 - Waterfall (includes stonework, mechanical/electrical and lighting)
- Stage 1 - Pond Fountain

- Decorative Steel Fence
- Decorative Steel Fence on top of Retaining Wall
- Wood Screen Fence (does not incl. private to private lot fencing)
- Wood Screen Fence on Masonry Wall - Includes Stonework
- Area shared 50/50 between Jagare Ridge HOA (JRHOA) & Jagare Ridge Golf Course (JRGC) (includes soft landscaping, plaza, pathway lighting, amenities and stonework)
 - Maintained by JRGC
 - Costs split 50/50 with JRHOA & JRGC

Non-HOA Obligation Items

- City Maintained Pathway Lighting
- City Maintained Area (incl. landscaping, pathway, site furnishings and playground)
- Private Golf Course holes, owned and maintained by the Jagare Ridge Golf Course

JAGARE RIDGE HOA

Please visit:

<https://jagareridgehoa.com/contact/>

Core Real Estate Group

email: info@coremanagement.ca

phone: 780.651.1577

MELCOR

For developer related concerns please visit:

<https://jagareridge/contact-us/>

CITY OF EDMONTON

For the City of Edmonton concerns please call
311 or visit:

https://311.edmonton.ca/reports/list_services

COMMUNITY LEAGUE

We encourage all owners to connect
with their community league for
exciting events in their area.

Please visit:

www.rosenthalcommunityleague.ca

